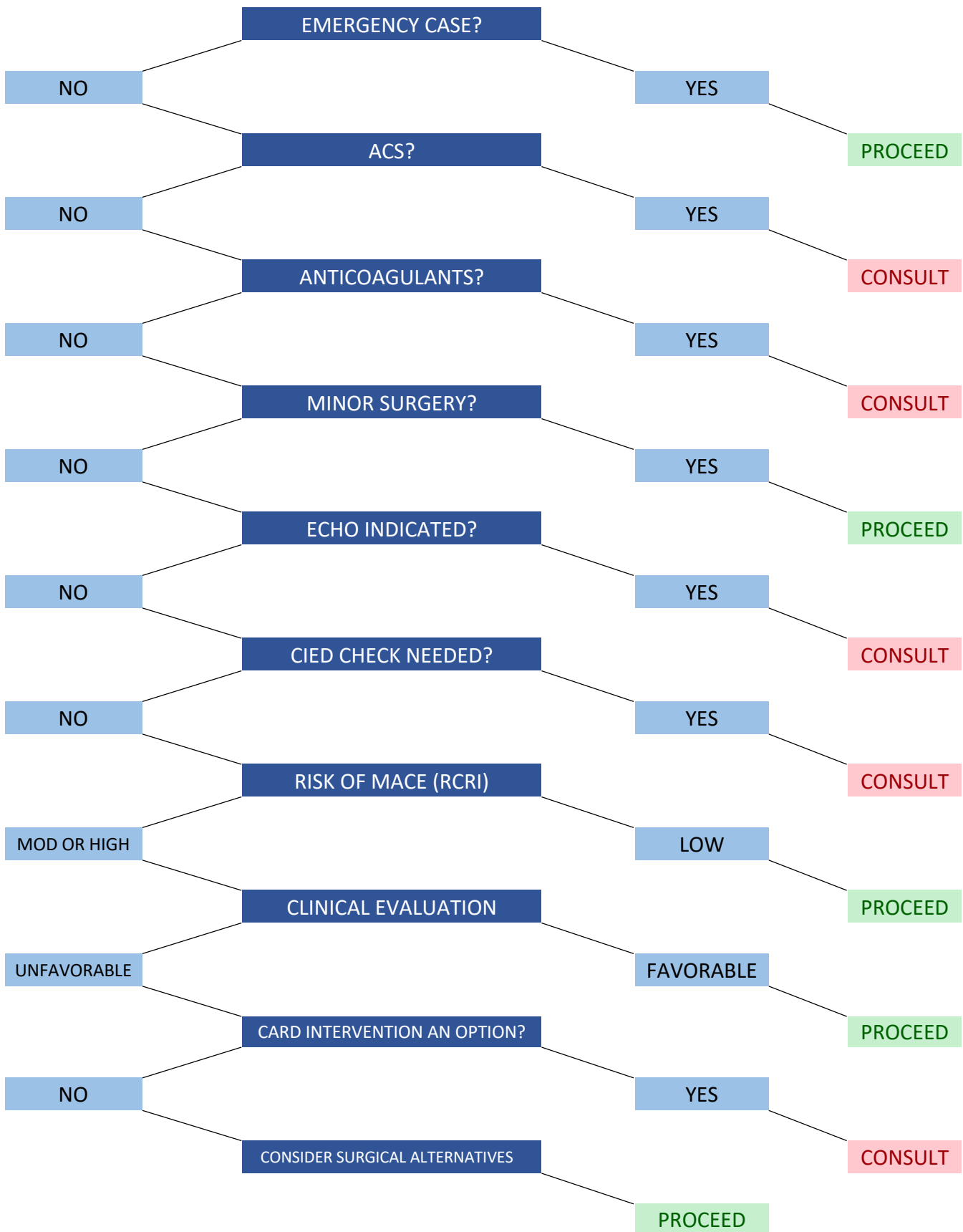


CARDIOLOGY CONSULT ALGORITHM SWA 2021



CARDIOLOGY CONSULT ALGORITHM: ABBREVIATIONS AND NOTES

ACS – ACUTE CORONARY SYNDROME

- Unstable angina
- MI within 60 days
- Pulmonary edema
- Significant arrhythmias

ANTICOAGULANT THERAPY

- DES (drug eluting stent) mandates DAPT (dual antiplatelet therapy) for six months
- Holding Coumadin requires bridging therapy if mechanical heart valve or CHADSVASc of 6 or more
- Direct oral anticoagulants can be held closer to surgery date (bridging therapy rarely necessary)

CIED – CARDIAC INTERNAL ELECTRONIC DEVICE

- Requires a check within one year prior to a non-minor procedure

MACE – MAJOR ADVERSE CARDIAC EVENT

RCRI – REVISED CARDIAC RISK INDEX - PREDICTORS

- Known CAD
- HF
- TIA or CVA
- IDDM
- CKD: Cr ≥ 2 or Stage 4 (GFR < 30 ml/min)
- Intraabdominal, intrathoracic, or suprainguinal vascular surgery

RCRI → MACE

- 0 predictors → 0.04% - low risk
- 1 predictor → 0.9% - low risk
- 2 predictors → 6.6% - moderate risk
- 3+ predictors → 11% - high risk

CLINICAL EVALUATION

- Favorable – can attain 4 METS **or** normal biomarkers: BNP < 20 and Troponin < 0.014
- Examples of 4 METs:
 - Brisk walking for 3 blocks
 - Lawn mowing
 - Bicycling
 - Heavy house cleaning
 - Tennis
 - Climbing two flights of stairs

ECHOCARDIOGRAM PREOP INDICATIONS

- History of HF **and** worsening clinical status or no evaluation within 12 months
- Significant valvular disease **and** worsening clinical status or no eval within 12 months
- New heart murmur
- Unexplained DOE
- Primary pulmonary hypertension (Group I) **and** major surgery or no evaluation within 12 months